

Fitting The Technology Solutions 1051 Accessory

Suite C
Loughborough Technology
Centre
Epinal Way
Loughborough
Leics
LE11 3GE
Tel: +44 (0) 1509 238248
Fax: +44 (0) 1509 220020
Email: enquiries@tsl.uk.com

Overview

This document details the fitting of a Technology Solutions 1051 Accessory to a Symbol MC9062 handheld terminal to provide Smart Card and IrDA functionality

Contents

1	Introduction	3
2	Installation of the Driver	3
3	Fitting of the Hardware	4
4	Functional Test	6
5	Notes	6

History

Version	Date	Modifications
1.0	01/06/06	Document Creation

Technology Solutions (UK) Ltd reserves the right to change the specifications of products and services without notice. The information contained in this document is Private and Confidential and is subject to Non Disclosure Agreement between Technology Solutions (UK) Ltd and the receiving company. No part of this document may be reproduced in any form without the written consent of the author.

1 Introduction



The Technology Solutions 1051 Accessory is a semi-permanent installation to the terminal. It is fixed to maintain the environmental specification of the terminal.

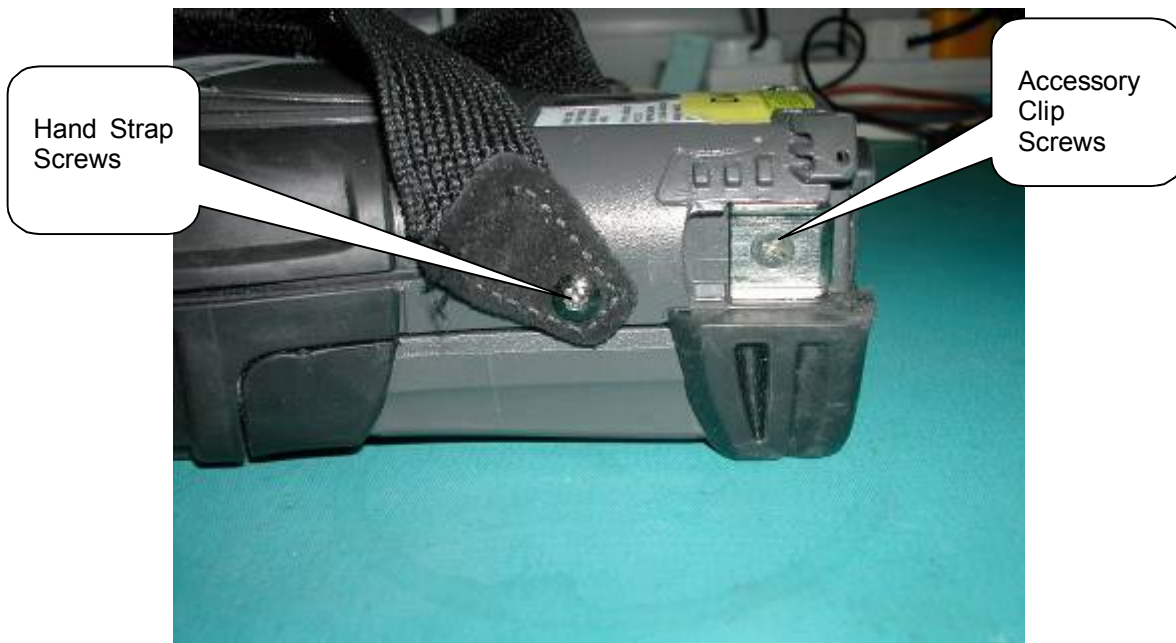
2 Installation of the Driver

Copy the provided cab file to the device. Once the accessory has been installed run the cab file to deploy the driver. A warm boot is required to install the switch and smart card drivers.

A small application "TestResMan" is provided to test the smart card functionality. Copy this to the device also.

The driver can be removed using the remove programs option in settings.

3 Fitting of the Hardware



The accessory attaches to the terminal at four points; the lower hand strap screws on each side and the accessory clip screws on each side. Remove these screws as shown below.



Technology Solutions (UK) Ltd reserves the right to change the specifications of products and services without notice. The information contained in this document is Private and Confidential and is subject to Non Disclosure Agreement between Technology Solutions (UK) Ltd and the receiving company. No part of this document may be reproduced in any form without the written consent of the author.

Insert the two nuts into the retaining cut outs then fit the hot shoe to the terminal aligning the cut out with the terminal battery release clip. Fix it in place using the hand strap screws. These can still anchor the hand strap as required.



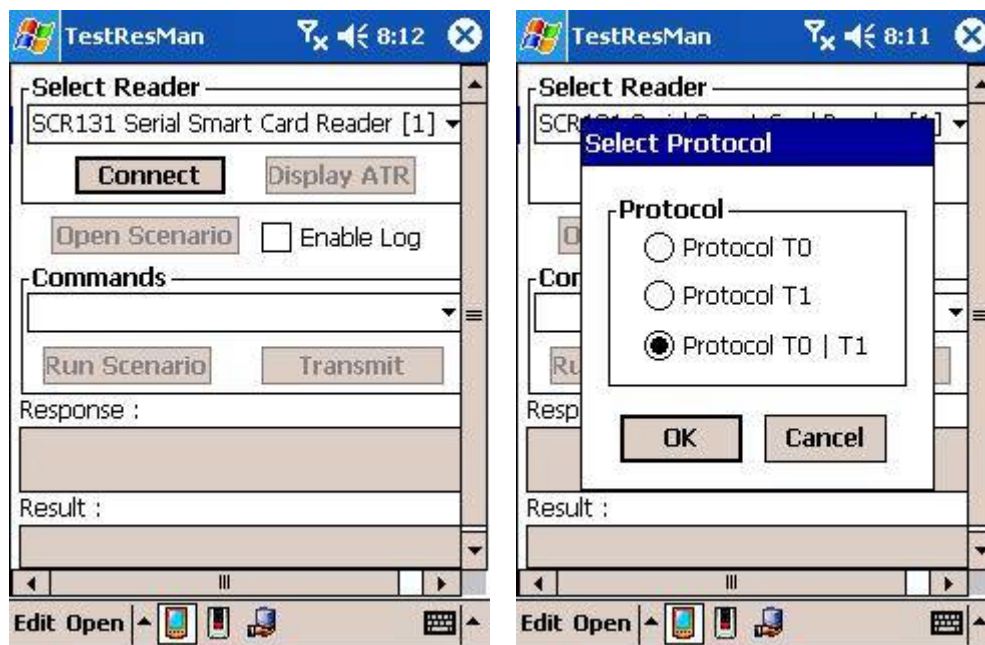
Now the accessory can be fixed to the hot shoe. This is best achieved by presenting the accessory at an angle to the base of the terminal and then pushing it on rotating it into position. The four screws, two each side, can then be fitted locking the accessory to the terminal.

Technology Solutions (UK) Ltd reserves the right to change the specifications of products and services without notice. The information contained in this document is Private and Confidential and is subject to Non Disclosure Agreement between Technology Solutions (UK) Ltd and the receiving company. No part of this document may be reproduced in any form without the written consent of the author.

4 Functional Test

Presenting the terminal to an IrDA enabled windows computer you should see the prompt “Another computer is nearby click here to send files...”. To test the IrDA try beaming a file from the terminal to another device that has IrDA. To beam files choose a file in the file system using file explorer, ideally one that is only a couple of kilobytes in size. Tap and hold to show the popup menu and select “beam file”. This should present the beam file dialog and initiate a search for receiving devices. If the file beam doesn’t start immediately then tap the “tap to send” label.

To test the smart card a simple application TestResMan is provided. This does not need to be installed but can be run wherever it was copied to the device. Run the application. If the driver has not been installed correctly it will exit immediately otherwise the main application screen should be shown. Insert a card into the card reader slot and tap “Connect”. Accept “T=0 | T=1” protocol. The card state should then show connected. Tap “Display ATR” to show the card’s Answer To Reset (ATR). Tap “Disconnect” to close communication with the card and the card can then be removed.



5 Notes

Smart cards are inserted with the contacts face up if holding the terminal out in front of you. This is indicated by the diagram on the moulding.

The IrDA eye points perpendicular to the back of the terminal.

The connector on the left of the accessory is a three wire serial port.

The driver install is also available for persistence so it can deploy every cold boot.

Technology Solutions (UK) Ltd reserves the right to change the specifications of products and services without notice. The information contained in this document is Private and Confidential and is subject to Non Disclosure Agreement between Technology Solutions (UK) Ltd and the receiving company. No part of this document may be reproduced in any form without the written consent of the author.

The terminal can be charged through the accessory using a standard terminal cradle supply.

Technology Solutions (UK) Ltd reserves the right to change the specifications of products and services without notice. The information contained in this document is Private and Confidential and is subject to Non Disclosure Agreement between Technology Solutions (UK) Ltd and the receiving company. No part of this document may be reproduced in any form without the written consent of the author.