

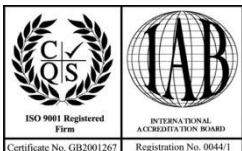
GPS 1058 - Demonstration Software



Technology Solutions UK Ltd Suite C,
Loughborough Technology Centre,
Epinal Way,
Loughborough,
Leicestershire,
LE11 3GE,
United Kingdom.

Tel: +44 (0) 1509 238248
Fax: +44 (0) 1509 220020

Email: enquiries@tsl.uk.com



1 Using the GPS 1058

There are no drivers required for the MC70 GPS accessory. It directly provides NMEA GPS data through the serial port on the bottom of the MC70 (COM1, 9600 baud). This data can be used by any NMEA compatible software application on the MC70. If necessary the accessory can be configured to provide data in SiRF binary format, but for general demonstration purposes this is unnecessary.

The GPS 1058 automatically powers up when the serial port on the bottom of the MC70 (COM1) is opened. By default it then outputs the following NMEA 2.2 compatible messages at 9600 baud:

NMEA message	Default output frequency
GGA – Global positioning fix data	Once every second
GSA – DOP and active satellites	Once every second
GSV – Satellites in view	Once every second
RMC – Recommended minimum specific GPS data	Once every second
VTG – track made good and ground speed.	Once every second
GLL – latitude, longitude, UTC of position fix and status	Once every second
ZDA – PPS timing message	Once every second

These messages allow immediate operation with standard navigation applications.

Technology Solutions (UK) Limited reserves the right to change its products, specifications and services at any time without notice. Technology Solutions (UK) Limited provides customer assistance in various technical areas, but does not have full access to data concerning the uses and applications of any customer's products. Therefore, Technology Solutions (UK) Limited assumes no responsibility for customer product design or for infringement of patents and/or the rights of third parties, which may result from assistance provided by Technology Solutions (UK) Limited. No part of this document may be reproduced in any form without the written consent of the author.

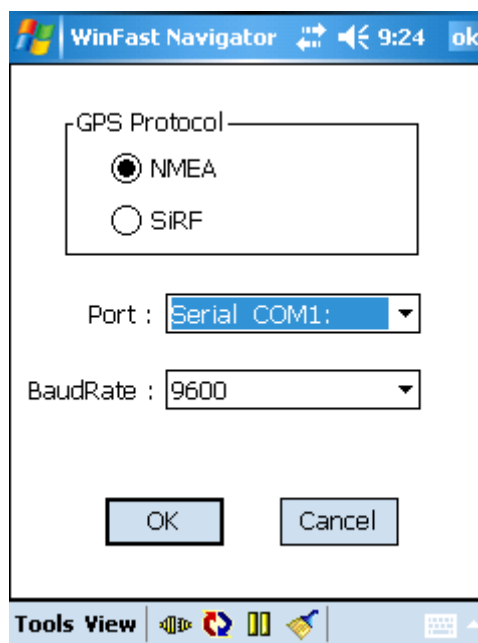
2 Using the demonstration application

To demonstrate basic GPS operation it is possible to use Leadtek's WinCE Monitor. This may be downloaded from <http://www.leadtek.com.tw/eng/support/download.asp?downlineid=80&downline=Leadtek Bluetooth GPS Receiver>

This link is provided for demonstration purposes only and Technology Solutions cannot provide any specific support on the application.

To install the application extract the files from the downloaded zip folder. Make sure that the mobile computer is connected via ActiveSync. Navigate to 'WinCEMonitor\ceMonitor 1.1\Setup 1.1' and double click on 'Install.exe'. Additional information is provided in 'Navigator for CE manual_v01.pdf' in the zip folder.

Connect the MC70 to the GPS receiver (if it is not already connected) and launch the application. On the toolbar at the bottom of the display use 'Tools>Port Setting' to configure the port as shown below:



Click 'OK' and then if necessary 'Tools>Connect' (or the 'Connect' icon in the toolbar) to open the port. You will then see a green light on the GPS accessory indicating that it is active. When the accessory has a valid position fix and orange light is also shown.

The View option in the toolbar allows one of three different views to be selected. "Singal Level" shows a summary of the satellites in view, "Navigation" the current position and satellites in use and "Development" the NMEA messages as received.

Technology Solutions (UK) Limited reserves the right to change its products, specifications and services at any time without notice. Technology Solutions (UK) Limited provides customer assistance in various technical areas, but does not have full access to data concerning the uses and applications of any customer's products. Therefore, Technology Solutions (UK) Limited assumes no responsibility for customer product design or for infringement of patents and/or the rights of third parties, which may result from assistance provided by Technology Solutions (UK) Limited. No part of this document may be reproduced in any form without the written consent of the author.

+ About TSL

TSL designs and manufactures both standard and custom embedded, snap on and standalone peripherals for handheld computer terminals. Embedded technologies include:

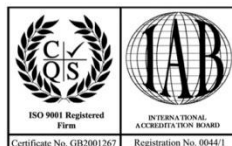
- GPS
- RFID – Low Frequency, High Frequency and UHF
- GPRS/GSM
- IrDA
- Contact Smartcard
- Fingerprint Biometrics
- 1D and 2D Barcode Scanning
- Bluetooth
- 802.11 WiFi
- Magnetic Card Readers
- OCR – B and ePassport

Utilizing class leading Industrial design, TSL develops products from concept through to high volume manufacture for Blue Chip companies around the world. Using the above technologies TSL develops innovative products in a timely and cost effective manner for a broad range of handheld devices.

Telephone: +44 (0)1509 238248
Fax: +44 (0)1509 220020

Postal Address: Technology Solutions (UK) Limited,
Suite C, Loughborough Technology Centre,
Epinal Way,
Loughborough,
Leicestershire,
LE11 3GE.
United Kingdom.

Email: enquiries@tsl.uk.com



Technology Solutions (UK) Limited reserves the right to change its products, specifications and services at any time without notice. Technology Solutions (UK) Limited provides customer assistance in various technical areas, but does not have full access to data concerning the uses and applications of any customer's products. Therefore, Technology Solutions (UK) Limited assumes no responsibility for customer product design or for infringement of patents and/or the rights of third parties, which may result from assistance provided by Technology Solutions (UK) Limited. No part of this document may be reproduced in any form without the written consent of the author.